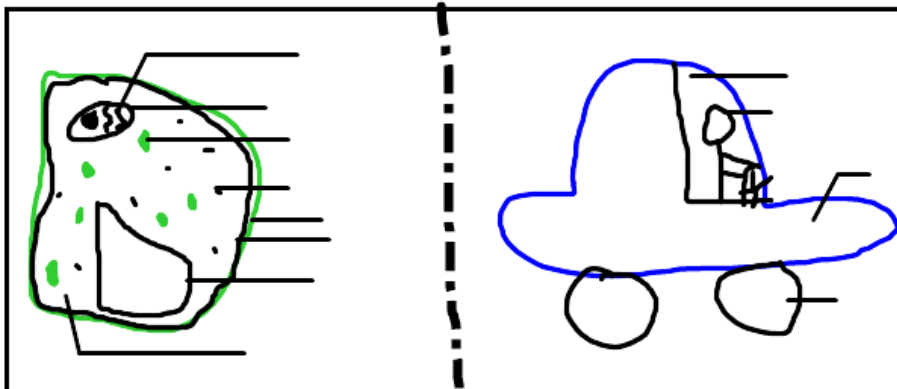


On one half of the paper you are to draw a plant cell and label it with all 8 parts of the cell you learned in class. Spelling counts! On the other half you are to draw something that is NOT alive and label 8 parts that do the same jobs as in the plant cell. Label the part and put the organelle you are comparing it to in brackets, example: driver (nucleus). Must be in colour.

You must include:

- nucleus
- cell membrane
- cytoplasm
- cell wall
- mitochondrion
- chloroplast
- vacuole
- chromosomes



Level	Criteria
1	3-4 parts labeled incorrectly and/or incorrect comparisons
2	1-2 parts labeled incorrectly and/or incorrect comparisons
3	All parts labeled correctly, correct comparisons
4	Extra parts labeled correctly, correct comparisons